



MONTHLY MEMBERSHIP PROGRESS REPORT

District 5 SKN

Results as of: 4/30/2017

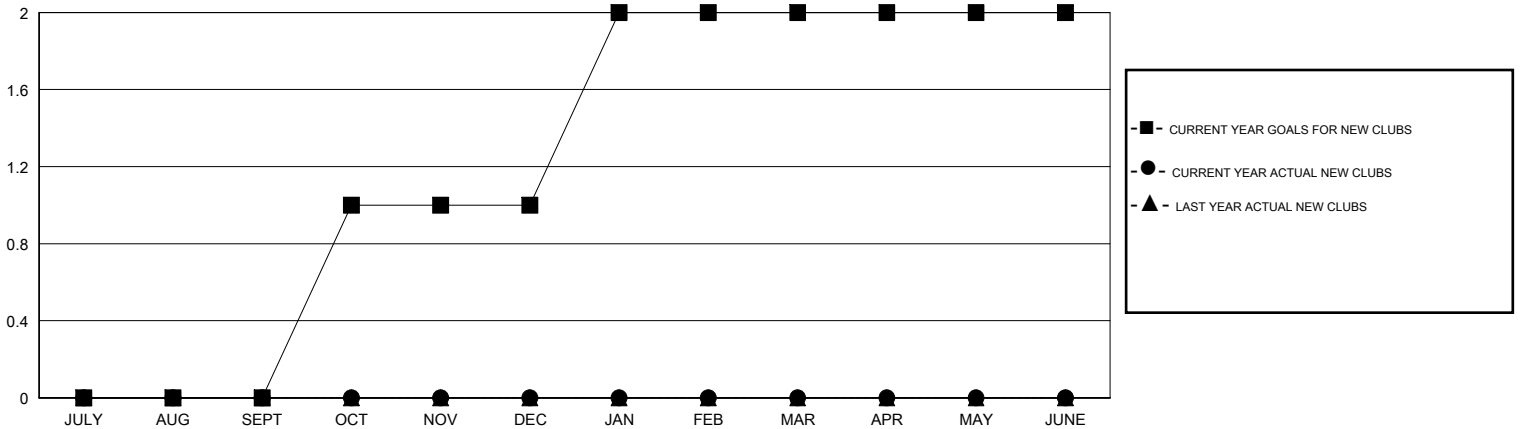
GMT: DENNIS STEVENSON

LOCATION SASKATCHEWAN

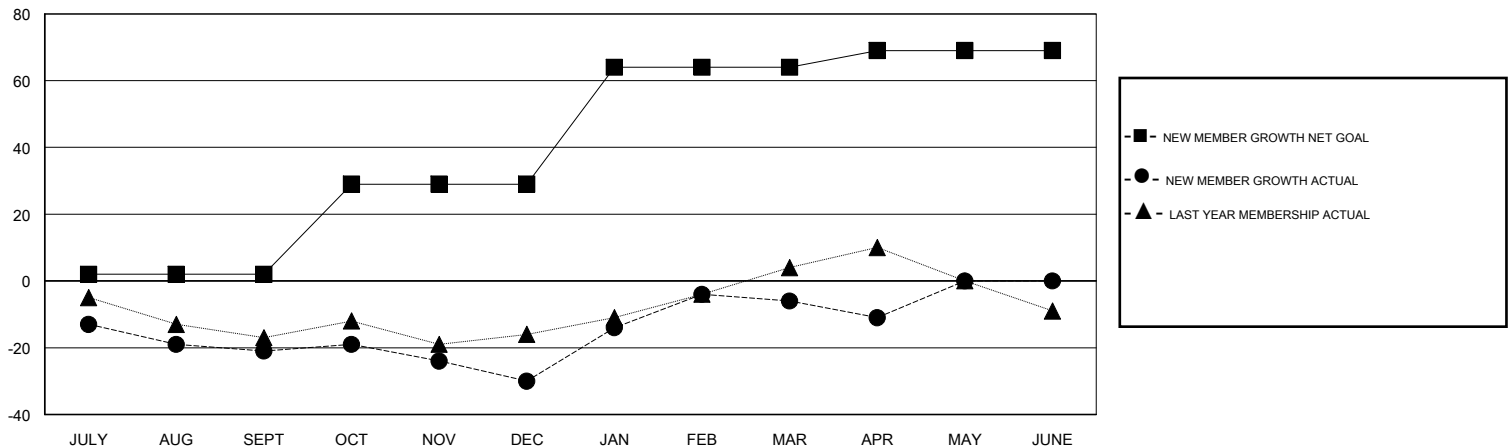
GMT CA

| Clubs | | | | Members | | | |
|-----------------------|---------------|-----------|---------------|-----------------------|--|--|--|
| RESULTS FOR 2016-2017 | | | | RESULTS FOR 2016-2017 | | | |
| QUARTER | NEW CLUB GOAL | NEW CLUBS | DROPPED CLUBS | QUARTER | NEW MEMBER GROWTH NET GOAL (not reinstated or transfers) | NEW MEMBER GROWTH ACTUAL (not reinstated or transfers) | DROPPED MEMBERS ACTUAL (including transfers) |
| JULY/AUG/SEPT | 0 | 0 | 1 | JULY/AUG/SEPT | 2 | 13 | 34 |
| OCT/NOV/DEC | 1 | 0 | 0 | OCT/NOV/DEC | 27 | 22 | 31 |
| JAN/FEB/MAR | 1 | 0 | 0 | JAN/FEB/MAR | 35 | 44 | 20 |
| APR/MAY/JUNE | 0 | 0 | 0 | APR/MAY/JUNE | 5 | 4 | 9 |

GOALS AND ACTUAL NEW CLUBS CUMULATIVE



GOALS AND ACTUAL MEMBERS CUMULATIVE



| | | | |
|------------------|---|---------------------------------|--------------|
| DROPPED CLUBS: 1 | 33 CLUBS OF 62 ADDED 1 OR MORE NEW MEMBERS | <u>GENDER DISTRIBUTION</u> | |
| DROPPED MEMBERS | | MALE | 943 (74.60%) |
| DECEASED | CLICK HERE FOR CUMULATIVE MEMBERSHIP DATA | FEMALE | 321 (25.40%) |
| CLUB CANCELLED | | TOTAL FAMILY UNIT MEMBERS | 216 |
| OTHER | | FAMILY MEMBERS PAYING HALF DUES | 109 |
| TOTAL | | 94 | |